

# ORGANIZATION CHART

## Montana's Conservation Districts



### MACD

501(c)4

- MACD Employee
- SWCDM Employee
- SWCDM Employee, with funds contributed by MACD for time spent on MACD projects

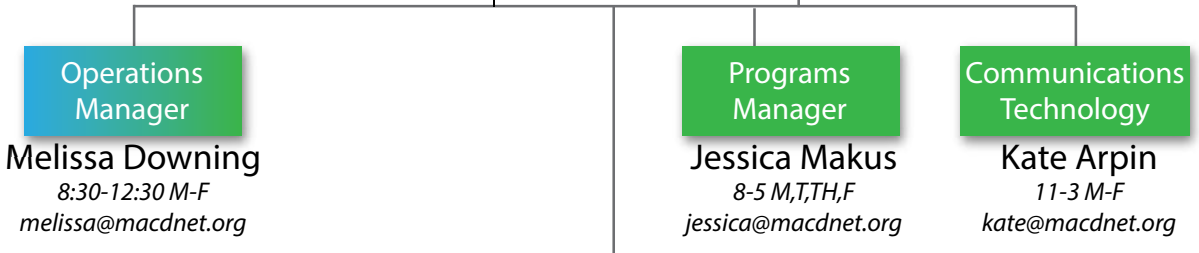
**Executive Director**

### SWCDM

501(c)3

**Assistant Director**

**Ann McCauley**  
32 hours M-Th  
ann@macdnet.org



### Area Resource Specialists

- Resource Specialist Western MT**  
Samantha Tappenbeck  
8-5 M-Th  
stappenbeck@macdnet.org
- Range Tech Lewistown**  
Loni Blackman  
loniblackman@macdnet.org
- Range Tech Miles City**  
Cheryl Schuldt  
cschuldt@macdnet.org

### SGI Range Conservationists

- Malta**  
Martin Townsend  
martin.townsend@macdnet.org
- Forsyth**  
Heather Nenninger  
hnenninger@macdnet.org
- Roundup**  
Hayden Nelson  
hayden.nelson@macdnet.org
- Ekalaka**  
Jalyn Klauzer  
jalyn.klauzer@macdnet.org

### Bridger Plant Materials Center Summer Part Time Employees



## Funding

MACD is funded by dues payments  
SWCDM is funded by grants & programs

## Office Property

The Helena Office is owned by SWCDM.  
MACD pays monthly rent for use of the space.

\*All employees full time unless otherwise noted